

The Academy of Florida Elder Law Attorneys Presents

The 2012

Elder Concert



A Multidisciplinary Approach to Elder Care

Registration Information

Register online at
www.afela.org

Friday, May 4, 2012
Tampa Airport Marriott

&
Friday, May 11, 2012
Ft. Lauderdale Marriott North



The AFELA Elder Concert

The Elder Concert is a one-day gathering of the growing network of elder care professionals in Florida.

You choose your preferred location: Ft. Lauderdale or Tampa.

Purposely structured for greater interaction and intensive learning, the Elder Concert presents you with five workshop sessions and one plenary luncheon presentation. At each session, you choose one topic of interest to you and then move from session to session as you meet new people, solidify old relationships, learn from the session facilitators, and make your own contribution to each topic. Written guides and materials accompany each presentation better encouraging you to take the issues back to your workplace for implementation and idea sharing.



Who should attend the Elder Concert?

- ♪ **Accountants**
- ♪ **Assisted Living Facility Administrators**
- ♪ **Elder Law Attorneys**
- ♪ **Financial Planners**
- ♪ **Geriatric Care Managers**
- ♪ **Guardians**
- ♪ **Social Workers**

The Elder Concert has been designed as an effort of The Florida Bar's Elder Law Section, the Florida State Guardianship Association, NASW — Florida chapter, the Florida Assisted Living Association, the Florida Geriatric Care Managers Association, the Florida Institute of CPAs and the program sponsor, the Academy of Florida Elder Law Attorneys.

Continuing Education

Guardians, LCSWs, LMFTs and LMHCs: CEU's can be self posted to CE Broker

Attorneys: The Florida Bar requires attorneys to self-post their CLEs online

Attorneys: Seven (7.0) credit hours, including one (1.0) ethics, of continuing education credits have been approved by The Florida Bar. Five (5.0) hours have been approved toward Elder Law Certification and Wills, Trusts, and Estates. Course number 6889 2.

Registered Guardians: Seven (7.0) hours Continuing Education credits are approved by the Statewide Public Guardianship Office, course approval number 20-344250.

Licensed Clinical Social Workers, Marriage & Family Therapists and Mental Health Counselors: Five (5.0) hours Continuing Education credits are approved by CE Broker, course approval number 20-345335

Schedule of Events

May 4 & 11, 2012

Tampa Airport Marriott & Ft. Lauderdale Marriott North

Topics and times offered are subject to change after schedule is published.

7:45 – 9:00 am Registration

7:45 – 9:00 am Continental Breakfast

8:45 – 9:00 am Opening Remarks

**9:00 – 10:15 am Session One —
Concurrent Workshops**

- Medicaid Reform – Rebecca Bell, Esq. / Howie Krooks, Esq.
- Elder Abuse – Detective Amy Dutton / Detective Mary Jo Lamont
- Pooled and Special Needs Trusts – Steven Hitchcock, Esq.
- So Your Ward Died... The Do's and Don'ts of Probate Administration – Enrique Zamora, Esq.
- Collateral Government Programs such as QMB, SLMB, etc. – Jessica Lillisand, Esq. / Marjorie Wolasky, Esq.
- CPA's as Watch Keepers for Elder Planning – Kevin Pillion, CPA / Tracy Gebert, CPA

10:15 – 10:45 am Refreshment Break with Exhibitors

**10:45 am – 12:00 pm Session Two —
Concurrent Workshops**

- Medicaid Reform – Rebecca Bell, Esq. / Howie Krooks, Esq.
- Pooled and Special Needs Trusts – Steven Hitchcock, Esq.
- So Your Ward Died... The Do's and Don'ts of Probate Administration – Enrique Zamora, Esq.
- You Gotta Have Friends: Finding Good Folks to Work With – Lee Eakin / Michelle Kenney / Jetta Getty
- Florida's New Power of Attorney Law: The Biggest Change since 1995 – Scott Solkoff, Esq.
- Navigating Financial Entitlements – Michael Dane

12:00 – 1:15 pm

Luncheon and Keynote

Speaker: Ethics, Conflict Resolution and Medication: Practical Tools for Elder Law and Policy
– Ken Goodman, Ph.D.

1:30 – 2:45 pm

**Session Three—
Concurrent Workshops**

- Collateral Government Programs such as QMB, SLMB, etc. – Jessica Lillisand, Esq. / Marjorie Wolasky, Esq.
- Medicaid Planning and Unlicensed Practice of Law – Len Mondschein, Esq. / Steve Quinnell, Esq.
- CPA's as Watch Keepers for Elder Planning – Kevin Pillion, CPA / Tracy Gebert, CPA
- Guardians Fees – Debra Broje, Esq. / Carolyn Landon, Esq.
- Caregiver Mediation – David Levy
- Elder Abuse – Detective Amy Dutton / Detective Mary Jo Lamont

2:45 – 3:00 pm

Refreshment Break with Exhibitors

3:00 – 4:15 pm

**Session Four —
Concurrent Workshops**

- Caregiver Mediation – David Levy
- Florida's New Power of Attorney Law: The Biggest Change since 1995 – Scott Solkoff, Esq.
- Guardians Fees – Debra Broje, Esq. / Carolyn Landon, Esq.
- You Gotta Have Friends: Finding Good Folks to Work With – Lee Eakin/Michelle Kenney / Jetta Getty
- Navigating Financial Entitlements – Michael Dane
- Medicaid Planning and Unlicensed Practice of Law – Len Mondschein, Esq. / Steve Quinnell, Esq.

Registration Information

AFELA Elder Concert May 4 & 11, 2012 Tampa Airport Marriott & Ft. Lauderdale Marriott North

Please make copies of this form for multiple registrants.

Name _____

Professional License # _____ Please check one: ☐ PG, ☐ LMHC, ☐ LMFT, ☐ LCSW

Company/Institution _____

Address _____

City _____ State _____ Zip _____

Phone _____ Fax _____ Email _____

I will be attending: ☐ (5/4) Tampa ☐ (5/11) Ft. Lauderdale

Breakout Sessions

Please check one topic from each session to indicate which one you want to attend.

Your responses are necessary to be sure we have the appropriate number of facilitators.

Session One — Concurrent Workshops

- ☐ Medicaid Reform
- ☐ Elder Abuse
- ☐ Pooled and Special Needs Trusts
- ☐ So Your Ward Died. The do's and don'ts of probate administration
- ☐ Collateral Government Programs such as QMB, SLMB
- ☐ CPA's as Watch Keepers for Elder Planning

Session Two — Concurrent Workshops

- ☐ Medicaid Reform
- ☐ Pooled and Special Needs Trusts
- ☐ So Your Ward Died. The Do's and Don'ts of Probate Administration
- ☐ You Gotta Have Friends: Finding Good Folks to Work With
- ☐ Florida's New Power of Attorney Law: The Biggest Change since 1995
- ☐ Navigating Financial Entitlements

Session Three — Concurrent Workshops

- ☐ Collateral Government Programs such as QMB, SLMB, etc.
- ☐ Medicaid Planning and Unlicensed Practice of Law
- ☐ CPA's as Watch Keepers for Elder Planning
- ☐ Guardians Fees
- ☐ Caregiver Mediation
- ☐ Elder Abuse

Session Four — Concurrent Workshops

- ☐ Caregiver Mediation
- ☐ Florida's New Power of Attorney Law: The Biggest Change since 1995
- ☐ Guardians Fees
- ☐ You Gotta Have Friends: Finding Good Folks to Work With
- ☐ Navigating Financial Entitlements
- ☐ Medicaid Planning and Unlicensed Practice of Law

Register online at www.afela.org.

Payment Information

- ☐ Register me for the AFELA Elder Concert: \$160.00 (before 4/20/12)
\$210.00 (after 4/20/12)

Total Amount Enclosed

\$ _____

- ☐ Check enclosed (Please make checks payable to: AFELA)

- ☐ Credit Card: ☐ Visa ☐ MC ☐ AmEx

CC# _____ Exp. _____

Name on Card _____ Billing Zip Code _____

Authorized Signature _____

**Registration is only \$160.00!
before 4/20/12**

\$210 after 4/20/12

Return registration form to:

AFELA, P.O. Box 13978, Tallahassee,
FL 32317, fax to 850/656-3038, or go
to www.afela.org to register online.

Cancellation Policy: All cancellations must be in writing. If request is received on or before April 15, 2012, refund is the amount paid less \$50. No refunds after April 15, 2012. No exceptions.

ADA Assistance: If you require special aids or services identified in the Americans with Disabilities Act, please contact the Conference Planner at 850/656-8848 or via email to Susan@afela.org.

Your completed registration form and payment should be received by April 15, 2012. No refunds after April 15, 2012. No exceptions.

Special Thanks To Our Early Bird Sponsors

Conductor Level

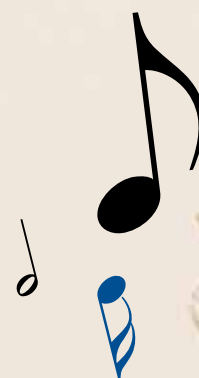
Guardian Trust

USB Sponsor

Met Life

Sonata Sponsor

Krause Financial Services



Singing Our Praises!

“I found the Elder Concert to be a very satisfying experience because the programs dealt with real issues and provided nuts and bolts information. It was a breath of fresh air from the usual hot air, ivory tower seminars!”

— **Robert P.M. Nordstrom**, Senior advocate and retired Michigan probate judge

“By attending the Elder Concert last year, I was able to catch up with the latest updates on critical senior topics. It is an excellent way for me to gather curtail multidisciplinary information when working with elders and the disabled. Thank you Mr. Solkoff and AFELA members for the time and recourses you invest in this event.”

— **Pamela Salomone, RN, CMC**, Certified Geriatric Care Manager

Academy of Florida Elder Law Attorneys

The Academy of Florida Elder Law Attorneys is the Florida chapter of the National Academy of Elder Law Attorneys and serves as a public policy group, a provider of quality continuing education and a support group to Elder Law Attorneys and their mission of assisting Florida's elderly and disabled.

The Academy of Florida Elder Law Attorneys mission is to ensure that its members are the premier providers of legal advocacy, guidance, and services to enhance the lives of people as they age and those with special needs.

President
Steve Quinnell, Pensacola

Program Co-Chairs
Cary Moss, Orlando
David Hook, New Port Ritchie

Executive Director
Kari Glisson, Tallahassee





AFELA Elder Concert


P.O. Box 13978
Tallahassee, FL 32317

Phone: 850/701-1002

Fax: 850/656-3038

www.afela.org

PRSRT STD
US POSTAGE
PAID
TALLAHASSEE, FL
MODERN MAILERS

 **Register Now!**
Elder Concert
*A Multidisciplinary
Approach to Elder Care*
May 4 & 11, 2012



Hotel Information

Friday, May 4 — Tampa

Reserve your room at the Tampa Airport Marriott by 4/13/12 for the AFELA room rate of \$130. Reservations can be made by calling 800/228-9290 or 813/879-5151. Please ask for the AFELA Elder Concert group rate.

Tampa Airport Marriott

4200 George J. Bean Parkway
Tampa, Florida 33607



Friday, May 11 — Ft. Lauderdale

Reserve your room at the Ft. Lauderdale Marriott North by 4/20/12 for the AFELA room rate of \$89. Reservations can be made by calling 800/228-9290 or 954/771-0440. Please ask for the AFELA Elder Concert group rate.

Ft. Lauderdale Marriott North

6650 N Andrews Avenue
Fort Lauderdale, FL 33309